



Ash Green Scout Group, The Youth Centre, Kent DA3 8JT  
[www.ashgreenscouts.org.uk](http://www.ashgreenscouts.org.uk)

**Ash Green Scouts AGM 6.30pm Thursday 15th June 2017**  
**at The Pavillion - New Ash Green**

**Agenda**

1. Welcome, apologies and adoption of AGM minutes 2016
2. Chair report – Emma Jones
3. Treasurer report – Lisa Stewart
4. Section reports; Beavers, Cubs, Scouts – issued by email and on website - not to be read
5. Group Scout Leader report – Peter Lewis - issued by email on website - not to be read
6. Re-election and nominations for Executive Committee – Chair, Secretary, Treasurer etc
7. Presentations and District address – Peter Lewis
8. Tribute to Alan Gordon – Peter Lewis
9. Any Other Business

***Refreshments will be available from the bar and refreshments offered for children.***

**Ash Green Scout Group**  
**Annual General meeting – Thursday 15<sup>th</sup> June 2017**  
**Group Executive Committee – Chair report**

*I would like to welcome everyone to our AGM. The business side will be kept brief, as the presentations this evening to the young people and leaders speak volumes on what a fantastic group Ash Green is.*

*Everyone has copies of the section reports so I won't dwell on the amazing year each section has had – Our successful family trip to the Somme in September and Centenary Cub Camp in Ashford being great events. These are but two of many highlights including Archery, Climbing, Camping, Trampolining, Drumming, First Aid, Rafting, Rifle shooting, fun days, Sleepovers, Wide games and so much more.*

*Through the highs of this year in September the group also suffered a huge blow with the unexpected loss of Alan Gordon. This had a big impact on the leader team who lost both a friend and mentor. The children were also hugely affected and I would like to thank everybody for pulling together and looking after each other at this very sad time.*

*None of the above mentioned activities and events could be achieved without the tireless enthusiasm of our dedicated leader team. Our leaders are an amazing group of people who voluntarily give up their free time to not only plan, but also to teach the children; and are endlessly coming up with new and exciting opportunities for them. These leaders are true heroes of our community and on behalf of us all I would like to say how grateful we are to them.*

*There are also the heroes behind the scenes – the members of the GEC. I would like to give special thanks to them for the tireless fundraising, paperwork and financial support.*

*What we have learnt over the years is many hands make light work – for example Natalie Hemsley is our badge secretary and has no commitment to meetings but does an invaluable job by organising and ordering the badges. Clare Hambleton is our Gift Aid coordinator – who again has no commitment to meetings but collates and sends off the Gift Aid annually.*

*There are many more people who step up to do odd tasks for which we are very grateful. Each section also requires a Parent Representative – to sit on the Executive. This equates to 4 meetings a year and you are there to talk to other parents in your section feedback information and also to raise any general parental issues to the committee. There are many, many ways to be involved so maybe something to consider. For example join our grass cutting rota for the Youth Centre. We will soon be asking for volunteers to help erect a chain-link*

*fence out the back of the Youth Centre so please add your name to this if you are able.*

*Due to a lack of parental support with fundraising events - For the first time in 8 years the committee has agreed that subs need to be increased. We have also occurred rises in costs of hall hire etc, therefore this increase is completely unavoidable. From September the cost per young person will be £15 per month.*

*I would like to remind parents that all payments of subs MUST be made by Standing Order only – and would be grateful if you could amend your standing orders to the new amount by 1<sup>st</sup> September. If anyone has any issues with this please see me after.*

*I would also like to ask all parents if you are a tax payer to fill in and return a Gift Aid Form. Gift Aid is where we the Group can claim 25p from the Inland Revenue for every pound paid by you on charitable donations to the group - including your child's subs, provided you are a taxpayer. It costs you absolutely nothing and all you need to do is sign a simple form! Gift Aid raised £4,673 for the group this year so the more we have the better. There are Gift Aid forms on the table with pens so before you go if you haven't done one and can, please do and return to anyone with a uniform on! Please also endeavour to make our lives easier by using the payment envelopes we have – they are available at any meeting night and in a box here.*

*Before I close I would like to take this opportunity to give thanks to Lisa Stewart who is stepping down as group executive treasurer. Her work over the last two years has been invaluable and as a group we are very grateful for her commitment and time.*

*I look forward to my continuing role on the GEC and hope to continue to see the growth of Ash Green Scout Group over the coming year.*

## **ASH GREEN SCOUT GROUP**

### **Minutes of Annual General Meeting held on 9<sup>th</sup> June 2016**

**Present**

Emma Jones	Chair
Peter Lewis	Group Scout Leader
Alan Gordon	Explorer Scout Leader
Lisa Stewart	Treasurer
Sheila Harris	Secretary
Louise Banks	Marketing
Jon Stafford	District Commissioner

Pat Roberts                      District Commissioner (Cub Scouts)

Kathryn Grant                  District Commissioner (Beavers)

Kelly Wills                      Scout Leader

Helen Richardson              Scout Leader

Paul Richardson Assistant Scout Leader

Mark Spurgeon                  Assistant Scout Leader

Mark Jennings                  Assistant Scout Leader

Sara Appleton                    Assistant Scout Leader

Julie Butler Assitant Scout Leader

Assistant Cub Scout Leader

Assistant Cub Scout Leader

Cub Scout Leader

Assistant Beaver Leader

Assistant Beaver Leader

Jonathan Elliot

Michael Banks

Charlotte Jarvis

Liz Pincott Fulton

Louise Bass

Elenor Hawkins Assitant Beaver Leader

Kelly Calow Assistant Beaver Leader

Cara Smith                      Beaver Leader

Jo Smith                          Beaver Leader

Ginny Spurgeon                  Assistant Cub Scout Leader

Parent Representatives:        Gregg van Hesteren (Forest)

Also: Gillian Lewis, Michael Jones, Margaret Withers, Sarah Catley, Clare Hambleton, Claire McAdie, Jasper Holliday, Craig Masterson, Katie Haily, Amy Copping, Alison Oakley, Scott Frazier, Clare Chapman, Tracy Wood, Karen Bernsten, Paul Jones, Lee Miller, Emma Way

### **Welcome, Apologies, and Adoption of AGM Minutes 2015**

Emma Jones welcomed those present and reported that apologies had been received from Bruce and Steph Clarke, Tanya Williams, Ruby Young, Sarah Thomas, Sarah Baker and Anita Thain. The 2015 Minutes were circulated and adopted with one minor alteration of Jonathan Elliott being amended to Assitant Cub Leader not Cub Leader.

### **Chair Report – Emma Jones**

The Chair Report was circulated and Emma added that a vote of thanks is due to all the Leaders for all the time and hard work they put in for the children. Emma also thanked the Executive Committee – Sheila Harris as Secretary, Lisa Stewart as Treasurer, Louise Banks Marketing, Natalie for badges, Anita Thain and Sarah Baker for Fundraising, and Clare Hambleton for Gift Aid.

Parents are urgently needed to assist Leaders with fundraising as Leaders are already stretched with organising activities for the young people. If each parent could help with two fundraising sessions per year this would be extremely helpful. Five fundraising activities are planned over the next year and parents were asked to add their name to a list provided.

Volunteers are needed to join the grass cutting rota, for which there is now a petrol mower, and also to assist in erecting a chain link fence.

Applications are needed for parent reps for Foresters, Dambusters and Jungle Cubs. Duties for this role are to speak to other parents and provide feedback to the Executive Committee at their meetings, which take place four times a year.

Parents are asked that all subs payments should be made by standing order. Gift Aid this year has amounted to over £4,000 so could anyone who has not completed a Gift Aid form please do so as this is a considerable addition to our funds without any additional cost to parents.

### **Treasurers Report- Lisa Stewart**

The Treasurers Report was circulated and there being no queries this was adopted.

### **Section Reports: Beavers, Cubs, Scouts**

These were circulated by email and on the website.

### **Group Scout Leader Report – Peter Lewis**

This was circulated by email and on the website.

### **Re-election and nominations for Executive Committee – Chair, Secretary, Treasurer etc**

Group Chair – Emma Jones was proposed by Peter Lewis, seconded by Louise Banks  
Treasurer – Lisa Stewart was proposed by Emma Jones and seconded by Louise Banks  
Secretary – Sheila Harris was proposed by Emma Jones and seconded by Louise Banks  
Marketing & Fundraising - Louise Banks were proposed by Emma Jones and seconded by Peter Lewis

Fundraising Co-Ordinators – Sarah Baker and Anita Thain were proposed by Emma Jones and seconded by Peter Lewis

Parent Reps confirmed as follows: Jasper Halliday (Dambusters), Will West (Wilderness), Greg van Hesteren (Forest), Emma Way (Timber), Ziad Awari (Jungle). Thanks were extended to Clare Chapman who has stood down as Timber representative.

### **Presentations and District Address – John Stafford DC**

The request for nominations for the Emma Jones award for most improved young person had been passed to each section this year. The announcement of their decision, which was approved by the Executive Committee, was passed to Peter Lewis. Noah Jones was overwhelmingly voted as being the most improved due to his enthusiasm, helpfulness and kindness. Scott Hudson, last year's winner, was asked to present the award and was himself awarded a memento of his own great achievement.

John Stafford was pleased to be able to present awards to some of the adults. The first was to Alan Gordon, Explorer Scout Leader, an award for 15 years of service during which he has achieved many wood beads. Wood beads were also awarded to Jonathan Elliott and Michael Banks, with many congratulations.

Kathryn Grant then presented the bronze badges for the Beavers. To win this award it is necessary to achieve six challenge badges and the successful Beavers were Amy Frazier and Lucy Calow. Well done to these two Beavers.

Pat Roberts then presented silver badges for the Cubs to James Banks and Noah Jones. Pat thanked the Leaders for all their hard work in assisting the young people in their achievements.

Jon Stafford said how nice it was to hear about all the achievements of the Group in spite of the challenges it faces. It is a vibrant Group with lots of Leaders, although it can always do with more. Employers are always impressed by people who are involved in scouting and Jon encouraged anyone to step forward to become a Leader as assistance and training is available for anyone interested.

### **Any Other Business**

Louise Banks announced that there will be a tombola stall on village day and any bottles, unwanted gifts etc would be gratefully received.

Helen Richardson said that there would be a Greyhound racing fundraiser on 24<sup>th</sup> June which would be a fun evening for anyone interested.

Peter Lewis said that there had been a Leaders training camp in April and Helen had had to leave early so she did not receive her trophy. This was duly presented.

Emma thanked the guests from District and invited those present to partake of cakes and drinks. There being no further business the meeting closed at 7.15pm.

# Ash Green Scout Group

## Group Scout Leader Report for the Annual General Meeting 2017

I am pleased to report that the Group continues to thrive, with all sections reporting good progress throughout the year. Our enthusiastic and hard-working leader team, backed by a strong Group Executive Committee, continues to deliver great *Scouting* to young people between the ages of 6 and 18 in New Ash Green and the surrounding area.

All sections report generally high attendance rates, and have had active programmes throughout the year, working on various badges, taking part in various outings and, of course, camping weekends and/or 'sleepovers'. Each section has produced an overview of their activities during the year which are attached.

Current membership stands at 125 young people, plus 14 young people in the Excelsior Explorer Section. The Explorers are 'counted' separately because, whilst they are affiliated to Ash Green Scouts, they are actually recorded as part of the Swanley District. Overall, numbers are slightly 'up' on last year when I reported that we had 126 young people including the Explorers. The maximum numbers (including Explorers) we could currently accommodate would be 168 in total, so at 139 young people we are fast approaching that absolute limit.

We closed our Waiting List to 'direct entry' into Cub sections last year. Young People can now only become Cub Scouts in the Group through natural progression from the Beaver Sections. That position generally remains unchanged until further notice.

Our 'uniformed' leader team currently stands at 25, which is less than we really need to be fully effective. We really need a further 5-6 people who are willing to become leaders in either the Beaver (Monday or Tuesday) or Cubs (Friday) sections. If any parent or supporter is willing to consider joining our enthusiastic team please let me (or any other leader) know!

We continue to encourage the development of our leaders but that has been somewhat more difficult than expected over the last year, due to the resignation of the Swanley District Training Manager, which resulted in less training opportunities arising than normal. The good news here is that a new Leader Training Manager has now been appointed for Swanley and that person is none other than our Wilderness Scout Troop Leader, Helen Ricardson! Congratulations, Helen! Helen's role at Ash Green will remain unchanged, but we will benefit from having much better access to training opportunities going forward. Two Assistant Group Scout Leaders – Mark Spurgeon and Bruce Clarke – have also been appointed – Congratulations! They will continue in their existing roles as Asst Scout Leaders as well. Mark and Bruce will be a valuable addition to the Group Management structure.

Our annual Leader Training Weekend, normally held in April, had to be postponed this year due to time constraints, but it will be back in 2018 – with a rather special training weekend being planned! Leader Training is a high priority as far as the Group is concerned. Quality training opportunities for leaders not only ensure that our Young People get the best *Scouting* possible, but also that our fantastic volunteer leaders are given the opportunity to enhance their knowledge and skills and complete their formal training as quickly as they can.

During the year, the Group has maintained links with the *Hartley Memory Café*, which provides a community service for those suffering with Alzheimer's and Dementia, and we have supported our Village Community in various ways including barrier cleaning and litter picking etc. We will be supporting both Village Day and the 50<sup>th</sup> Anniversary of New Ash Green Celebrations this year.

On behalf of the Group my grateful thanks go to all leaders for their enthusiasm and commitment to our young people and *Scouting*, to Emma Jones and the Executive Committee members for their continuing support, and to those parents and supporters who have found the time and enthusiasm to help make the Group the success it is.

Finally, there have been some changes made to the Group Policies Document which will be available for download on the Group Website shortly. I would encourage you all to download, and read, the latest version of the document.

**Peter Lewis**

Group Scout Leader

# **Ash Green Scout Group**

Financial Accounts for the Year Ended 31/03/2017

## Ash Green Scout Group

Summary of Financial Health at 31 Mar 2017

<b>ASH GREEN SCOUTS</b>	
<b>STATEMENT OF FINANCIAL ACTIVITIES</b>	
<b>FOR THE PERIOD OF 1st APRIL 2016 TO 31st MARCH 2017</b>	
<b>Assets</b>	<b>£</b>
General Account	13,180.15
Fundraising Account	4,832.17
Savings Account	4,391.54
	<b>22,403.86</b>
Reviewed by	.....
Professional Body	.....
Review Date	.....

### The General Account

- had a credit balance of £5,777.91 at 01 Apr 2016.
- Net income amounted to £7,402.24 at the end of the financial year
- Has a surplus carried forward to the 2017-18 financial year of £13,180.15

### The Fundraising Account

- Had a credit balance of £10,829.95 at 01 Apr 2016.
- Net income amounted to (£5,997.78) at the end of the financial year
- Has a surplus carried forward to the 2017-18 financial year of £4,832.17

### The Savings Account ('Emergency Fund')

- Had a credit balance of £3,089.71 at 01 Apr 2016.
- Net income amounted to £1,301.83 at the end of the financial year
- Has a surplus carried forward to the 2017-18 financial year of £4,391.54

The total financial assets of the Group at 31/03/2017 amounted to **£22,403.86**.

*(This is an increase over the 2015/2016 Financial year of £ 2,606.29, but the Group's Membership fees of £5,952.00 were not paid until after the end of the 2016/17 financial year. This amount will appear in the 2017/18 financial accounts).*

## General Account Income & Expenditure

Income	2016-17		2015-2016	
	£	£	£	£
Subs, Uniform & Joining fees		19,973		20,051
Camp receipts		2,219		4,161
KIJ Camp receipts		1,111		246
Fund Raising		379		39
Activity and Group Outings income		1,957		2,888
Charitable Income		4,693		3,526
Other Income		765		7,418
Interest Received		0		0
		31,097		38,329
 <b>Expenditure</b>				
Membership / Insurance (1)	-		10,647	
Premises Rentals	3,000		3,476	
Premises improvements	480		2,076	
Group Equipment	3,626		1,603	
Group Outings	1,550		-	
Uniformed Section Budgets	2,975		1,800	
Uniformed Section Activities	660		1,577	
Camps	5,648		4,613	
Training & Courses	1,357		300	
Uniforms & Badges	1,419		1,467	
Catering	47		-	
Stationery	31		532	
OSM, Web and promotional costs	406		100	
Miscellaneous expenses (2)	640		8,238	
Alan Gordon Memorial	407		-	
Jack Howard Donation	149		-	
		22,395		36,429
Transfer to Emergency Funds	1,300		-	
Less total Expenditure		23,695		36,429
(Deficit)/Surplus for year		7,402		1,900

### NOTES

1. Membership charge of £5,952 for 2017/18 received too late for inclusion in 2016/17 accounts. The Membership cost of £10,647 in the 2016/17 year accounted for both 2014/15 and 2015/16 years.
2. Analysis of expenses in 2015/16 year was less detailed than 2016/17, resulting in some (verified) large amounts recorded as 'Expenses', rather than allocated elsewhere. Revised accounting procedures are now in place and these now provide greater transparency of expenditure.

### Savings Account

The Group's Savings Account is where we keep our 'Emergency Funds'.

The only transactions during the year 2016-2017 were the automated transfer of £100.00 per calendar month from the General Account, plus interest accrued during the year.

#### Savings Account

	Debit £	Credit £
Opening Balance at 01/04/2016	-	3,089.71
Transfers from Gen Acc (11 x £100, 1 x £200)	-	1,300
Interest Earned	-	1.83
Total Carried Forward to 2017/18 year	-	4,391.54

### Fund-Raising Account

The 'Fund-Raising Account' is where we deposit receipts from 'general' group fund raising activities (ie Barrier cleaning, Jumble and Table Top Sales, 'Smartie Tubes' etc.

Specific, or targeted, fund raising (ie funds for Kent International Jamboree *KIJ*) is shown in the General Account (*see page 2*).

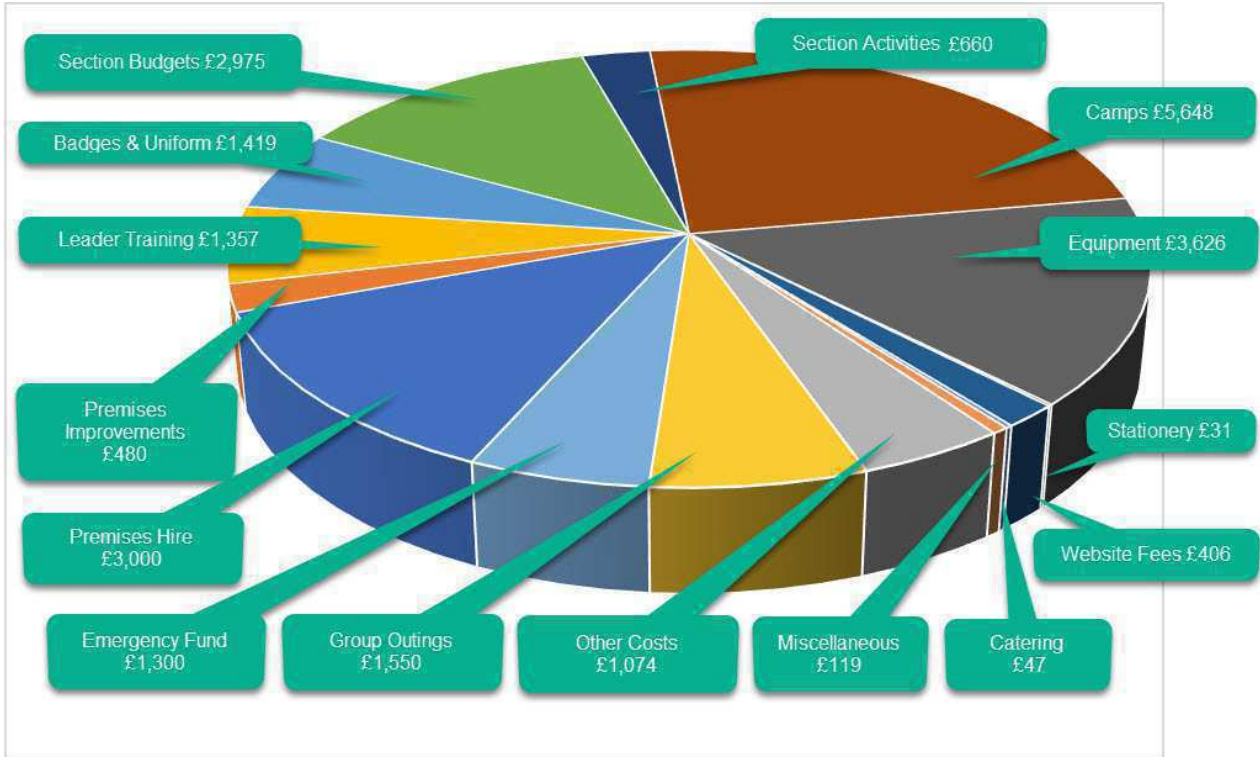
#### Fund Raising Account

	Debit £	Credit £
Opening Balance at 01/04/2016	-	10,829.95
Total credits during 2016/2017	-	3,693.75
Total paid out during 2016/2017 (*1)	9,691.53	-
	9,691.53	14,523.70
Total Carried Forward to 2017/18 year		4,832.17

#### Note:

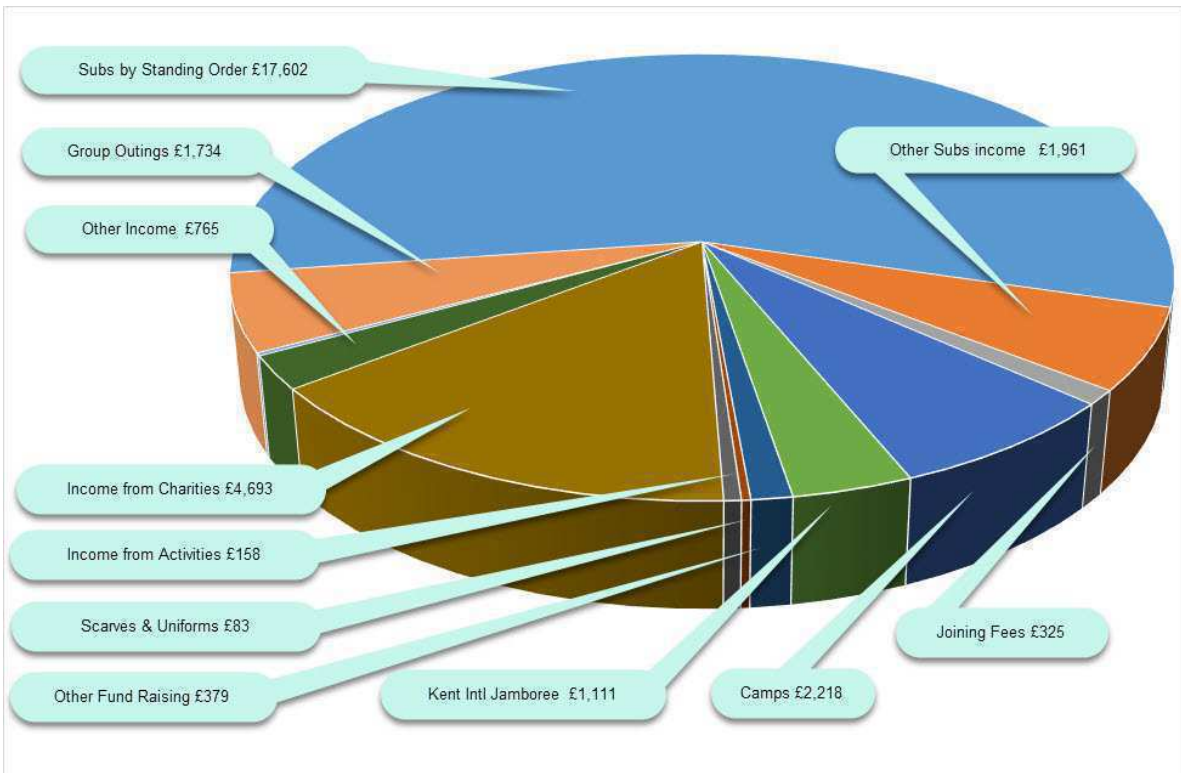
(\*1) The expenditure included £8,550 paid to Fencetek Ltd for the Security Fencing to the Youth Centre. This formed part of our obligations under our 'hire agreement' with the Youth Centre and was almost entirely funded by grants received (in 2015/16) by the Group for that sole purpose.

How we spent our income in the Financial Year 1 Apr 16 – 31 Mar 17.



*Note: We paid our Membership Fees (amounting to £5,952) after the end of our Financial Year and these will be shown in NEXT year's account summary.*

Our sources of Income during the Financial Year 1 Apr 16- 31 Mar 17.



## **SECTION REPORTS ASH GREEN SCOUT GROUP 2017**

### **LITTLE FORESTERS BEAVER COLONY.**

We currently have 24 beavers & 3 leaders with our occasional helper...Kevin Bass.

Over the last year we have accomplished quite a lot. Various activity badges along with challenge badges which has resulted in 2 of our beavers gaining the highest award which is the Chief Scout Bronze Award. This is a massive achievement, so a big congratulations to Lewis Miller-Wills & Jude Fitzpatrick. We aim to complete a few more over the coming months.

We have had a fun packed programme which the leader team work tirelessly on to provide elements of fun & skill. The children have loved every minute of it & gained a knowledge of what scouting is all about. This ranges from basic map & compass, knots & lashings, fire lighting & helping within the community with litter picking.

They have had visits to Glovers Farm with another visit in the pipeline to gain their Farm to Fork badge. We aim to provide an outdoor camp in the very near future as they have just had a indoor beaver sleepover which was very successful, but it's not the same as sleeping in a tent & singing around a campfire! They have also taken to Archery which was provided by our cub leaders...Michael & Tanya. We definitely have some budding Robin Hoods among us.

Moving forward, our aim is to still provide an exciting programme & we as a leader team hope that they still enjoy our time with us.

**Jo Smith. BSL Little Foresters Colony.**

### **LITTLE DAMBUSTERS BEAVER COLONY**

Little Dambusters currently have 18 members – 3 of these have just started linking with Jungle Cub pack.

In the last year 11 Little Dambusters Beavers have achieved their Chief Scouts Bronze Award, with 5 of these being awarded at the AGM, and another 4 should complete theirs by the end of October.

We have enjoyed a varied programme including visits from staff at Milestone School and Hartley Owls, a visit out to the fire station in New Ash Green, as well as archery, with a visit to Glovers Farm and a local hike planned for the summer term. Badges completed include Digital Citizen 1, Safety and Cooks. Altogether, Little Dambusters have achieved a total of 254 badges between them and at least another 50 will be awarded before the end of the summer term.

We sadly said goodbye to Tony Baker as our Assistant Leader before Easter, due to other commitments he has with New Barn scout group, but joining us this term as an Assistant Leader is Jasper Holliday. We currently have 4 leaders (2 of whom rotate on a fortnightly basis) and have also received great parental support for our weekly meetings, many thanks to all those who have helped out in the last year. We would also like to thank explorers Morgan and Rob for all their help with the colony up to February half term this year.

Some of the Beavers enjoyed a District fun day in January at Horizons School in Swanley and several will also be attending the District Beavers skills day on 10<sup>th</sup> June at Farningham Woods. We had a sleepover just before Christmas and have a further 2 planned for this year – one for the weekend of 8/9 July, this will be the first time many of our Beavers have camped outdoors under canvas. We have a further activity sleepover planned for 30 Sep/01 Oct at Downe Campsite near Bromley.

We are as always very proud of the Little Dambusters, they have worked hard towards their badges and we have had a lot of fun in the process, this is reflected in near on 100% attendance week on week and some lovely comments from parents as to how much their children are enjoying the programme we have planned for them.

### **Cara Smith – BSL Tic Tac**

#### **JUNGLE CUB PACK**

Jungle Pack currently have 19 cubs, 3 of whom are due to move up to scouts before summer with another 3 linking early to accommodate KIJ. We have a permanent leader team of 4 plus two young leaders from New Barn. Our current Senior Sixer is Ruby Fulton.

During the past year, the Jungle have participated in many activities both in the youth centre and away from it. 2016 was the 100<sup>th</sup> centenary for Cubs and as such there were related events including: Cub's Centenary Camp at Kingswood in Ashford, Cub's Promise Party at Lower Grange Farm and the District Cub Party at Swanley.

We had our Summer Camp last year at Thirftwood in Essex where we took part in various activities such as Kayaking and Wall climbing. We are also planning to return to Triftwood this year as the Cubs enjoy their time there.

We also did other fun activities such as Kayaking at Danson Park, Wall climbing and Cave bus at Lower Grange Farm, Trampolining at SOAR in Gillingham and Rifle shooting and Archery. We also organised an educational visit to Tesco, where we learnt about food production and nutrition. Because of the last minute cancelation of JOTT this year, we managed to attend the Kent County 'Cubs Big Day Out' at Leeds Castle, which was fun.

In addition to the above, plus other off-site activities, the Cubs have worked on traditional scouting skills such as knots, map reading, hiking, camp fires and camp songs. These ensure that the main elements of what being a Cub scout is continued with the young people. We are also looking to carry on the emphasis of 'Traditional Scouting' skills throughout the year.

This year, we have worked hard on badge work and 6 Cubs have been awarded with their Chef Scout Silver.

The Cubs enjoy their time in Jungle pack and we try to ensure that they have an interesting programme to keep them excited about returning each week, we feel it is important to also have fun.

### **Mike Banks ACSL – Jungle Pack**

### **TIMBER SCOUT TROOP.**

We currently have 15 scouts with 5 linking from Forest pack Cubs & 7 leaders, with Greg Van Hesteren being our parent rep. Over the past year our programme has included map & compass, hiking, fire lighting, cooking, fundraising & much more. We have visited the fire station, Glovers Farm, Soar Trampoline Park & had the Guide dogs & drummer come to visit us.

Our summer camp last year was at Youlbury in Oxford which was a great success. Other camps have included Thriftwood, Broadstone Warren & Farningham Woods for the much requested Survival camp where they built shelters & slept in them for the night.

Over the summer months we have got body zorbing at Lower Grange Farm & water sports at Mote Park booked.

Our main event in July is KIJ which is a week-long camp at Detling show ground where over 6,000 scouts & explorers from all over the world camp together in different sub camps. We as a group have 14 explorers, 21 scouts & 9 leaders attending. It's going to be a camp definitely to remember!!

I personally would like to thank my leader team for their effortless contribution to Timber Troop. They work really hard on the programme planning to make sure the scouts enjoy their time with us, providing them with the skills they need for when they move on to Explorers. Keep up the good work.

On another note, I would like to inform you all that after KIJ, I will be taking a sabbatical for a couple of months. The troop is being left in capable hands with Sara stepping up to be the section leader. I will be in the background keeping up to date with what great adventures you will be having & I look forward to joining you all again in October.

**Kelly Wills. SL Timber Troop.**

### **WILDERNESS SCOUT TROOP**

Wilderness currently have 20 Scouts, with 6 more due to be linking this term. 2 will soon be moving on, hopefully both to Explorers.

Last summer camp we went to Youlbury near Oxford, we had a great week there doing lots of different activities. In the autumn we went to Thriftwood, and in the spring we did a survival camp in Farningham woods, they built their own shelters and fires and generally had a wonderful time! This summer we will be attending Kent International Jamboree, which will be a great experience for them, camping with thousands of other Scouts from around the world.

The Troop have worked on a variety of badges and skills. We've done knife safety and skills, pioneering, firelighting, electronics, a CSI night, map work, hikes, wide games, cooking, body zorbing and many other things. We've got watersports planned for a summer evening, as well as the obligatory campfire to end the summer term.

This year we've welcomed Jonathan to our team of leaders, who is proving to be a great asset to us with his enthusiasm and knowledge. The team is working well, with lots of ideas, enthusiasm and plenty of skills between us that we enjoy passing on to the Scouts. We are

always looking for new things to try out! My team of leaders are great, friends as well as colleagues if you like, I couldn't do this without them, so thanks to Mark, Paul and Jonathan, I do appreciate it!

**Helen Richardson - SL Wilderness Troop**

### **EXCELSIOR EXPLORER UNIT**

We currently have 15 members with more to join us in the lead up to KIJ where the majority of the unit will be going.

In September we had 7 Explorers complete their DofE expedition and we have recently had our first ever bronze DofE award completed and approved with a few others nearly done, we hope to have more completed soon.

Over the last year we have attended Gilwell24 and gone camping at Youlbury, Broadstone Warren and Farningham wood. We have made rope bridges, been on hikes, made bath bombs, had a cooking competition, been trampolining, celebrated Chinese new year, cut down trees and been kayaking at mote park...

Over the next year we have some going to Gilwell24 with Speedwell Explorers (Longfield & Hartley), KIJ, scarfest and paint balling to name a few. The unit has gone from strength to strength and we're looking to improve traditional scouting skills such as pioneering and map reading.

**Mark Jennings – Excelsior Explorer Leader**

## **Youth Centre Report 1/45/2017**

### Grass Cutting

We have a rota setup with a few willing (and un-willing) parents who have offered to take turns in cutting the grass at the YC, this will be a big help, so we don't have to ask Leaders.

### Acoustic Panels

The YC Trustees were so impressed with our installation of acoustic panels in the hall, they have got a quote from our man to install more panels on the roof, this will dampen the sound down even further.

**This work was done and completed over the Easter break.**

Following a meeting I had with the YC Trustees 15/2/17

Present: John, Terry & Dani

### Fire escape lighting

The Trustees are fully in agreement that lighting is needed along the path to the gate. They also want lights along the path to help with security. An Electrician has been approached to carry out the work and are currently waiting for it to be done.

**As of today 1/6/17, the lighting issue has not been addressed. I have approached the Trustees a couple of times about this, they assure me an Electrician has been contacted and it will happen soon!**

### Memorial Benches

The YC are going to fit two benches in the garden (Positioned at the back corners of the grass, facing the building). The benches will be fixed to small pathing slab bases. The position will not hinder the grass from being used, so I can't see it being an issue to the group.

**The benches have now been concreted into bricked bases.**

### Alan's Plaque

They are fully supportive of us have a plaque and they have suggested which I think is a lovely position. The brick pillar by the big winnows facing the cafe/bar area. But they are happy for it to go pretty much anywhere we want.

**The trustees have agreed the position; the plaque will be installed after the AGM when the plaque will be unveiled to the public. I have created a mockup with curtains, so the plaque can be unveiled at the AGM**

### Flood Lights

Somehow our flood lights have moved from the original positions. This is not something they are aware of and did not do! They have both been turned so they are facing the building more rather than the Grass area. I will go back with a ladder at some point and move them back.

**I have moved the flood light positions, hopefully they are back in the right place now.**

### Flower beds

The trustees are going to install a wooden edge to the grass. The area behind the edging towards the fence will be turned in to a flower bed. They are going to add plants/flowers to this area. They are more than happy if we want to plant things or as I suggested adding bird feeders/boxes etc to it. The raised planter given to the group from little leaves will be positioned next to the shed.

**Nothing has been done to date 1/6/17.**

### Dead hedge (Stick fence)

They are largely happy with our dead hedge, but would like it tied up. They are going to get the Woodlands group to come in and complete it and tidy it up a bit. They also want to extend it more down the path into the wooded area.

**Nothing has been done to date 1/6/17.**

### Fire Pit

They are happy with our fire pit idea but are pressing us to complete the work ASAP. I said we would get it done at some point over the summer.

### Dentist Fence

Legally we have to replace the chain link fence between the YC and the Dentist which the contractors took down in error. I have been looking for the best deals and hopefully have found a suitable replacement for around £200/250. I will organize a working party to erect it hopefully in the next few weeks.

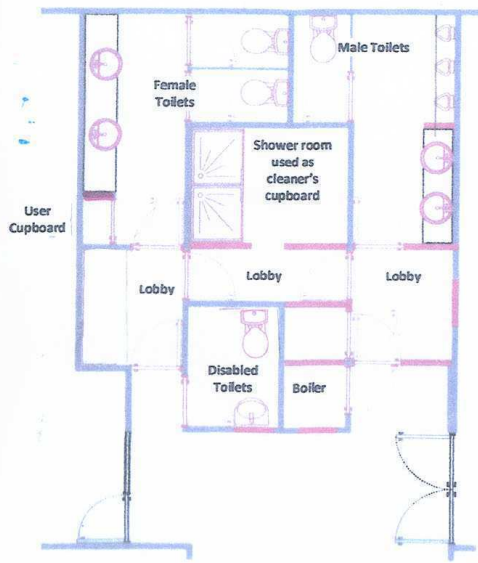
**I have been shopping around for a good price on the replacement fence, I have found a supplier on the internet that let us down, so I need to find a replacement.**

### Tyres

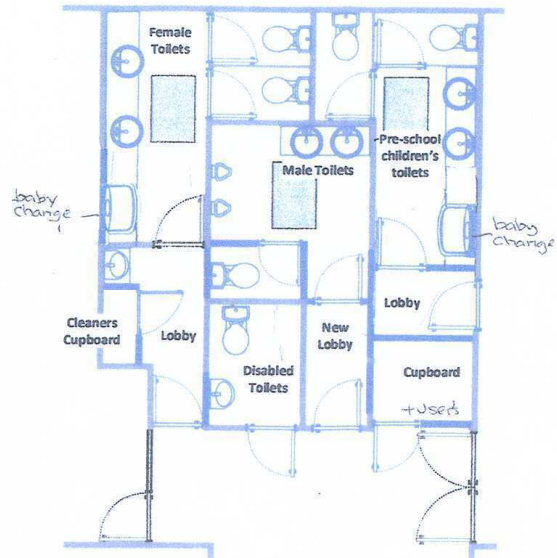
The issue of the tyres keeps coming up. They don't want them! They are ugly, dirty and keep getting thrown over the fence into the dentist. They appreciate the Scout section are keen to keep them, as a compromise they are getting the fire pit area landscaped and cleared back a little with a three tier slope. Large logs will be secured to the ground to sit on. The trustees are keen for us to have our own space but have pointed out, the building has multi-users and want it to look it's best.

### Refurbishment of Toilets

The Trustees are undertaking the refurbishment of the existing toilets and have a contractor booked to build new 'Child' toilets with a door for access from the hall. Apart from the benefits of having a child loo, the building work shouldn't have must impact to the group as the work will be carried out in August. We will still have access to a store cupboards if needed, but will have to bear in mind the hall will be a building site for a few weeks.



existing



Proposed.

### Building of a storage facility outside

The Trustees have agreed in principle to the group building a storage out-house or garage for us to store some equipment. The Trustees have had some 'Off-the-record' feedback from the planning department at Sevenoaks council and it is suggested that it is moved to the opposite side of the wooded area next to the dentist carpark so not to be seen from residents. It was also suggested that it may have to move into the YC grounds more following the building line of the dentist. The YC trustees are happy for us to go ahead and apply for planning permission and have suggested we contact the VA amenities committee first, as they will have to agree it before planning permission is sort.

**I have been given plans of the YC grounds and I will draw up a rough draft of what we want before we seek planning approval.**

**Mike Group YC Liaison**



Ash Green Scout Group, New Ash Green, Kent.

## STANDING ORDER FORM

To: The Manager

Name of bank/building society

Bank/Building Society Address

Please debit: £

15.00

each month on the

1st

Account holder name(s)

Account number

Sort code

My address

Post code

To:

Lloyds TSB plc. Gravesend Branch 78 New Road. Gravesend, Kent. DA11 0AR

For the credit of: Ash Green Scout Group,

Account No: 28249560

Sort code: 30-93-60

Signed

Date

**Please return form to your BANK**

giftaid it

## Gift Aid declaration – for past, present & future donations

Name of charity or Community Amateur Sports Club

-----

Please treat as Gift Aid donations all qualifying gifts of money made

today  in the past 4 years  in the future

Please tick all boxes you wish to apply.

I confirm I have paid or will pay an amount of Income Tax and/or Capital Gains Tax for each tax year (6 April to 5 April) that is at least equal to the amount of tax that all the charities or Community Amateur Sports Clubs (CASCs) that I donate to will reclaim on my gifts for that tax year. I understand that other taxes such as VAT and Council Tax do not qualify. I understand the charity will reclaim 28p of tax on every £1 that I gave up to 5 April 2008 and will reclaim 25p of tax on every £1 that I give on or after 6 April 2008.

### Donor's details

Title ----- First name or initial(s) -----

Surname -----

Full home address -----

-----

Postcode -----

Date -----

Signature -----

**Please notify the charity or CASC if you:**

- *Want to cancel this declaration*
- *Change your name or home address*
- *No longer pay sufficient tax on your income and/or capital gains.*

*If you pay Income Tax at the higher or additional rate and want to receive the additional tax relief due to you, you must include all your Gift Aid donations on your Self Assessment tax return or ask HM Revenue and Customs to adjust your tax code.*